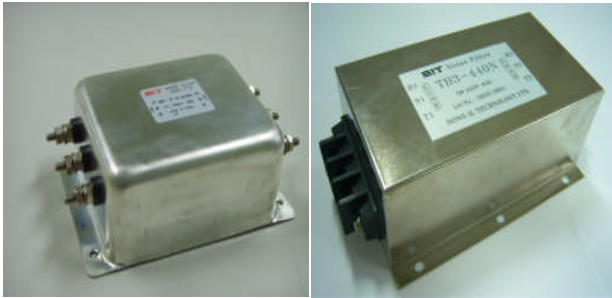


# EMI/EMC FILTER

## SQ3/TB3 SERIES



### FEATURES

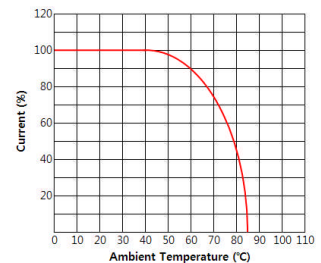
- 3-phase, 3-line type
- Epoxy molded for reliability.
- Good shield effect by using metal case.
- Compact and economical.

### APPLICATIONS

- Digital equipments.
- Suitable for FA equipments.
- Computerized washing machines.
- Industrial equipments like UPS, inverters, converters.

### SPECIFICATIONS

Model	Rated Voltage (3phase, AC)	Rated Current	Leakage Current	Temperature Rise	Operating Temperature(°C)
SQ3-T15	380V	15A	1.6mA max	45°C max.	-25°C to +85°C including temperature rise.
SQ3-T30	380V	30A	3.5mA max		
SQ3-T30A	250V	30A	2.5mA max		
SQ3-T50A,T50B	250V	50A	1.0mA max.		
TB3-425N	440V	25A	12.0mA max		
TB3-440N	440V	40A	4.0mA max		



Note:

Test Voltage: 1500V AC one minute line to earth.

Insulation Resistance: 300Mohm min. at 500V DC.

Voltage Drop: 1V max. at rated current.

Weight: 1,400g for SQ3-Series.

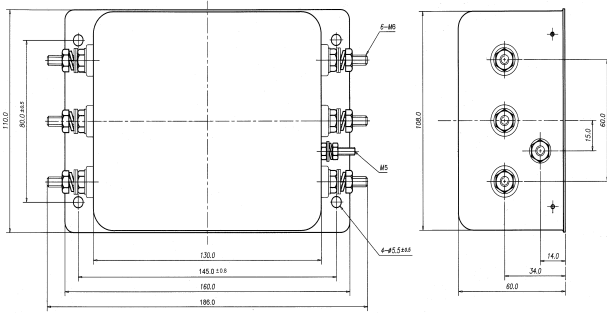
2,800g for TB3-Series.

#### Model Number Construction

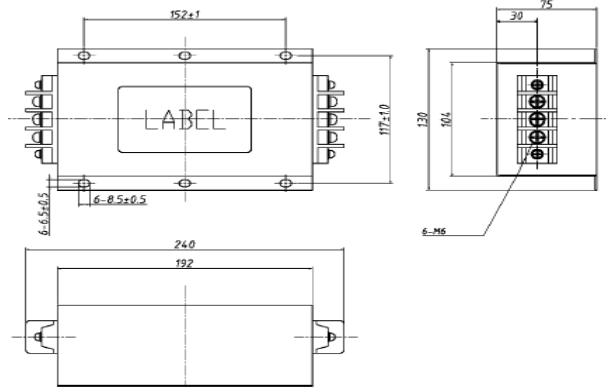
SQ3	T	30
Case Style/3-Phase Filter SQ3:See Dimension next page TB3:See Dimension next page	Input/Output Terminal Style SQ3-T15/30*: M5 Stud SQ3-T50*: M6 Stud TB3 Series: Terminal Block	Current Rating : AC rms 15 : 15 amp(SQ3-Series Only) 30 : 30 amp(SQ3-Series Only) 50 : 50 amp(SQ3-Series Only) 25 : 25 amp(TB3-Series Only) 40 : 40 amp(TB3-Series Only)

# Shapes and Dimensions

## SQ3 Series

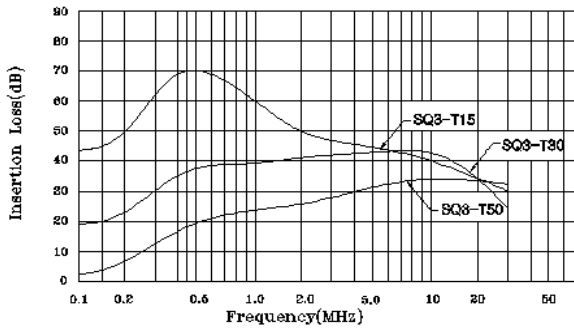


## TB3-Series

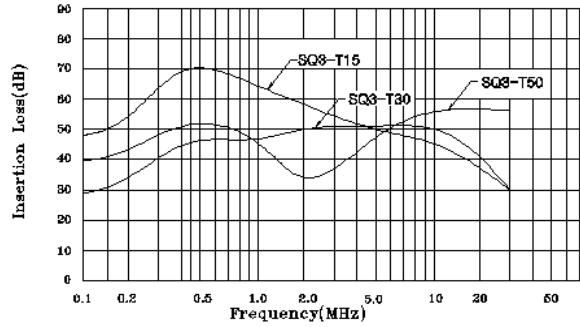


# Attenuation Characteristics

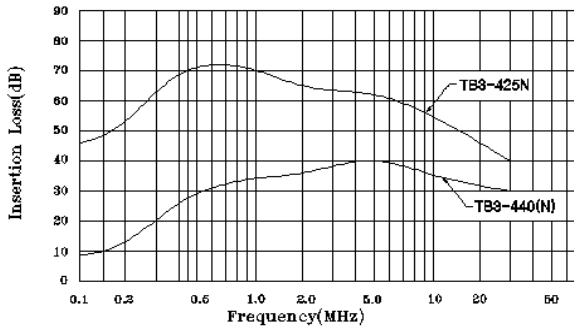
### ●Common Mode(SQ3-T15/30/50\*)



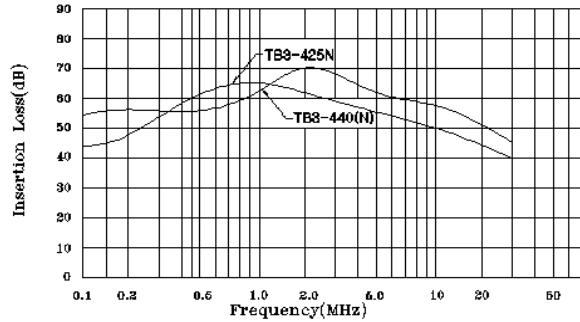
### ●Differential Mode(SQ3-T15/30/50\*)



### ●Common Mode(TB3-425N/440\*)



### ●Differential Mode(TB3-425N/440\*)



### ●Measurement configuration

