

EMI/EMC FILTER

CL SERIES



FEATURES

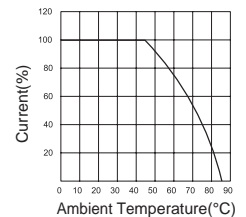
- Miniature general purpose plastic case with metal cover.
- Suitable for the products that must conform to FCC, FTZ.
- Varieties in circuit and component for right selection.
- Good filtering characteristics for both differential mode and common mode.
- Epoxy molded for reliability.
- Good shield effect by using metal cover.

APPLICATIONS

- Personal computers and peripherals.
- Digital equipments.
- For industrial and OA equipments.
- For vending machines and OA equipments.

SPECIFICATIONS

Model	Rated Voltage (AC,DC)	Rated Current	Rated Current (250V AC)	Temperature Rise	Operating Temperature
CL 1,2-F10-12 (R)	250V	1A	0.35mA max.	40°C max.	-25°C to + 85°C Including temperature rise
CL 1,2-F10-13 (R)			0.50mA max.		
CL 1,2-F16-12 (R)	250V	1.6A	0.35mA max.	40°C max.	
CL 1,2-F16-13 (R)			0.50mA max.		
CL 1,2-F30-12 (R)	250V	3A	0.35mA max.	40°C max.	
CL 1,2-F30-13 (R)			0.50mA max.		
CL 1,2-F45-12 (R)	250V	4.5A	0.35mA max.	40°C max.	
CL 1,2-F45-13 (R)			0.50mA max.		
CL 1,2-F60-12 (R)	250V	6A	0.35mA max.	40°C max.	
CL 1,2-F60-13 (R)			0.50mA max.		

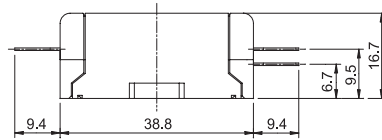
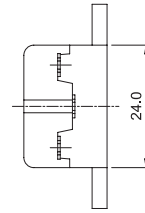
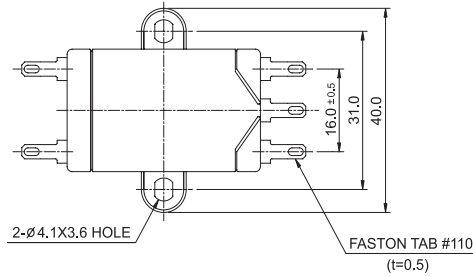


Note : All types are designed to meet the requirement of UL 1283, CSA 22.2, IEC60939
 Test Voltage : 1500V AC one minute, line to earth.
 Insulation Resistance: 300 Mohm min. at 500V DC.
 Voltage Drop : 1V max. at rated current.
 Weight : CL 1,2 Series : 27g.

■ Model Number Construction

CL	1	F	10	1	2	R
Series Description: Screw Mount/Metallic shield Case	Circuit : See Circuit Diagram next page	Input/Output Terminal style F:Faston Tab #110	Current Rating:AC rms 10 : 1 amp 16 : 1.6 amp 30 : 3 amp 45 : 4.5 amp 60 : 6 amp	Line-Line Cap.Value 1:0.1 μ F	Line-Gnd Cap.Value 2:2000 pF 3:3300 pF	R:with resistor

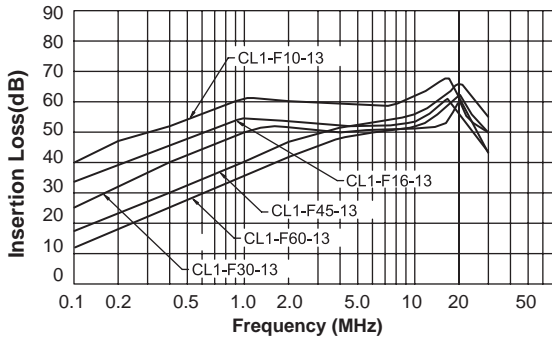
Shapes and Dimensions



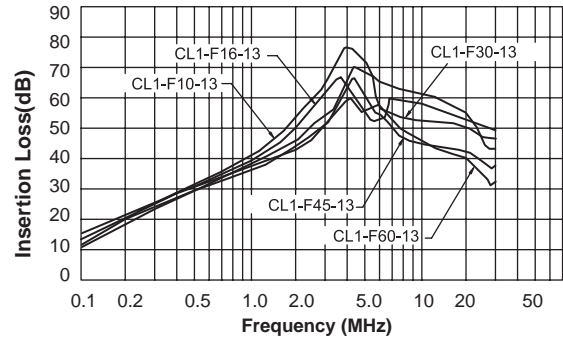
* General tolerance : ± 1.0
 * Unit : mm
 * Metallic Shield Case

Attenuation Characteristics

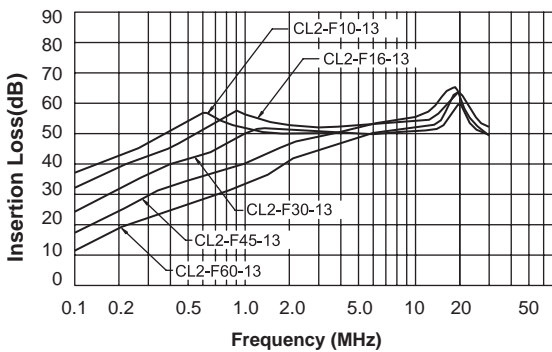
● Common Mode (CL1-F* **13* types)



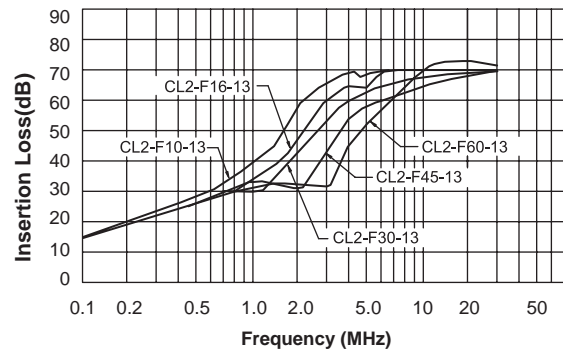
● Differential Mode (CL1-F* **13* types)



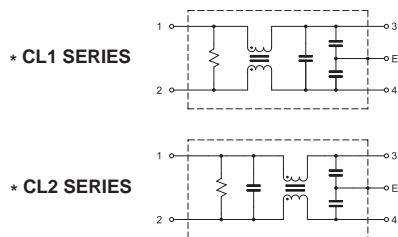
● Differential Mode (CL2-F* **13* types)



● Differential Mode (CL2-F* **13* types)



● Circuit Diagram



● Measurement configuration

