

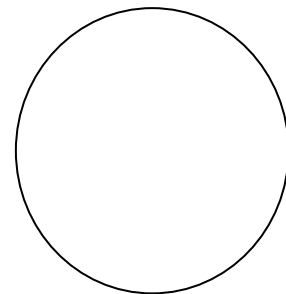
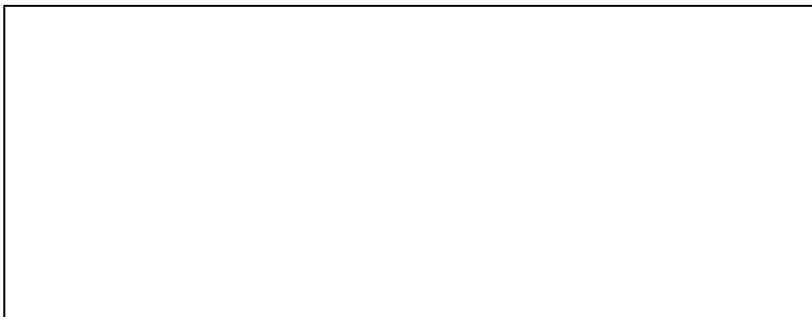
SPECIFICATION FOR APPROVAL

PRODUCT	9Vdc2000mA SPS
MODEL	SW18-09002000-EK
PART NO.	SW18-09002000-EKB1
VER:	A
CUSTOMER	PWK
DATE	20130726

本 电 器 符 合	MEETSAFETYSTD., MEET ROHS MEET CEC STD.
AC PIN:	2

希望回签日/EXPECTED FEEDBACK BEFORE: 2013年8月10日

发行印



*未签回而下订单即视同认可！

生产工厂 /MANUFACTORY	设计验证/日期 DESIGN VERIFIED BY	设计师/日期 DESIGNED BY	工程确认/日期 Engineering Verification BY	QE 验证/日期 QE VERIFIED BY
TAE				

SHENZHEN TOP-ASIA ELECTRONICS CO., LTD.

地址: 深圳市宝安区西乡后瑞新瑞物流园 B 栋三楼

Add: 3F//A&B .XinRui Logistics pack, HouRui, HuangTian, Xixiang Town
, Baoan, Shenzhen, P. R. C.

业务联系: 채선국 (CAI SEON GUK) 070-8860-1863

E-mail: hdt7451@hanmail.net

Tel : 070-8860-1863

P. C: 518108

Fax: 031-769-1863

PRODUCT SPECIFICATIONS

Index

1. Scope	4
2. Electrical Characteristics test	4
2.1 Input Characteristic	4
2.1.1 Input Voltage and Frequency	4
2.1.2 Input current	4
2.1.3 Ac inrush current	4
2.1.4 Input leakage current	4
2.1.5 Efficiency	4
2.1.6 Stand-by power consumption	4
2.2 Output Characteristic.....	5
2.2.1 Output voltage and current	5
2.2.2 Output leakage current	5
2.2.3 Startup and Turn-on Delay	5
2.2.4 Overshoot	5
2.2.5 Short-Circuit Protection (SCP)	5
2.2.6 Over Current Protection (OCP)	5
2.2.7 Over Voltage Protection (OVP)	5
2.2.8 Loop Stability	5
3. EMC-Specification	6
4. Safety details:	6
5. Mechanical Specifications	6
5.1 Physical	6
5.2 Input and Output Configuration	6
附图:	
6. DC Cord.....	1
7. Production of appearance drawing	1
8. Label	1
9. PE BAG.....	1
11. Packing.....	2
12. BOM.....	2

PRODUCT SPECIFICATIONS

1 Scope:

This document describes power supply unit for the I.T.E.. This document covers all electrical, mechanical, environmental and testing aspects of the power supply unit. The power supply unit must comply with all of the requirements of this specification and the drawings and specifications referenced here in.

2 Electrical Characteristic test:

2.1 Input Characteristics:

2.1.1 Input Voltage and Frequency

The power supply shall meet all specifications when powered from the following sources.

Voltage Range	Line Frequency	Minimum Voltage	Maximum Voltage
100-240Vac	47 ~ 63 Hz	90Vac	264 Vac

2.1.2 Input Current

The maximum input current shall be less than 1.5A.

2.1.3 AC Inrush Current

Peak inrush current shall be limited to 45A within 10ms at 230Vac(Cold Start).

2.1.4 Input Leakage Current

The leakage current shall not exceed 0.25 mA.

2.1.5 Efficiency

72.0% Minimum. At input 100-240Vac,100%Load.

2.1.6 Stand-by power consumption

0.75W Max At AC nominal input@output min load

PRODUCT SPECIFICATIONS

2.2 Output Characteristics:

2.2.1 Output Voltage and Current

The power supply shall have one regulated DC output of **+9V**.

The table below defines the total regulation band for the output, which includes line regulation, load regulation, transient response, and effects due to environmental conditions and aging. Voltage shall be measured at the power supply output connector

Mode	Output Current Range		Output Voltage range		Ripple Noise
	Min.	Max.	Min.	Max.	Max.
C.C.	0mA	2000mA	8.55V	9.45V	100mVpp

Ripple & Noise Test: Add 0.1uF/50V ceramic capacitor and 10uF/50V capacitor across the output terminal. Measured with 20MHz Bandwidth Oscilloscope.

Line regulation: <1% ; Load regulation: <5%

2.2.2 Output Leakage Current

With the A/C input unplugged, apply a **9V** D/C source to the output as specified , The leakage current drawn from the D/C source should be less than 100uA.

2.2.3 Startup and Turn-on Delay

Power supply shall be able to start up into a resistive load up to the maximum rated current with maximum load capacitance of 1,000uF. The elapsed time between the application of input power and the attainment of output voltage to the nominal value shall not exceed **1 second**.

2.2.4 Overshoot

At turn on, the output voltage shall not exceed steady state by more than **10%**.

2.2.5 Short-Circuit Protection

6.0W Max Auto recovery.

2.2.6 Over Current Protection

5.5A Max OCP Method :Auto recovery

2.2.7 Over Voltage Protection

15V Max OVP Method: Voltage limit

Customer:
Model: SW18-09002000-EK
SPECIFICATION NO.:
Part no.: SW18-09002000-EKB1

Switching Mode Power Supply

PRODUCT SPECIFICATIONS

3 EMC-Specification

Noise-suppressed acc: EN 55022

4 Safety details:

Standards/class	:	EN60950 ClassII
Voltage rating	input :	100Vac-240Vac 50-60Hz
	Output :	9Vdc 2000mA
Separation (prim-sec)	:	galvanic , via transformer
Creepage distance	:	>= 6.0mm
And air path	:	>=4.5mm
High-voltage test	:	>= 3.3KV/2S
Leakage current	:	Maximum leakage current is10mA
Application range	:	Information technology equipment Including electrical business equipment
Ambient temperature	:	0°C to +40° C , 10 to 90% rhd

5 Mechanical Specifications

5.1 Physical

Case material: PC
Dimensions: 82mm(L) x 45mm(W) x 32mm(H) (not include input pins)

5.2 Input and Output Configuration

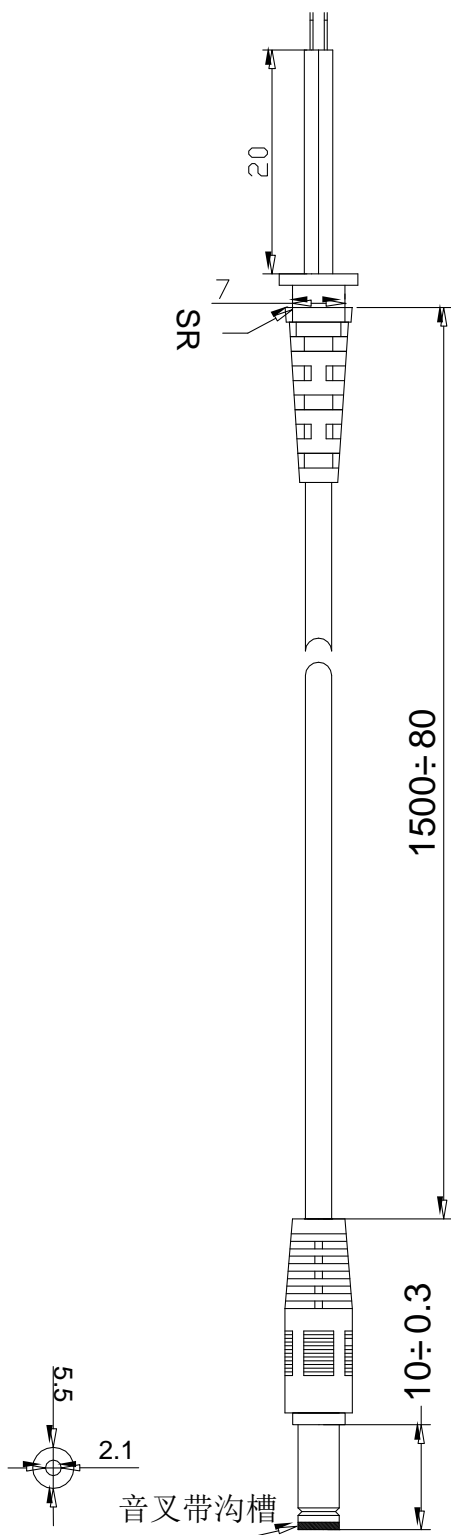
Input Pin:	EK pins
Output Connector:	2.1*5.5*10mm “H”头 音叉带沟槽
Polarity:	Center positive
Lead:	1.5m AWM2464 22AWG

Customer:
Model: SW18-09002000-EK
SPECIFICATION NO.:
Part no.: SW18-09002000-EKB1

Switching Mode Power Supply

PRODUCT SPECIFICATIONS

6 DC Cord drawing (black) :



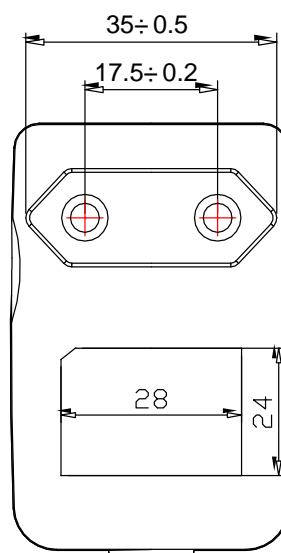
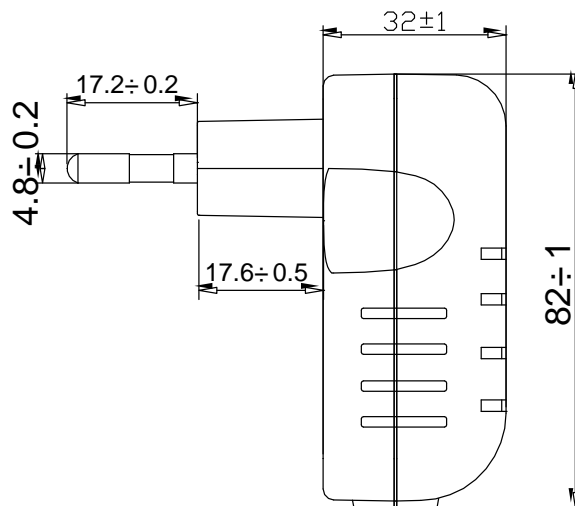
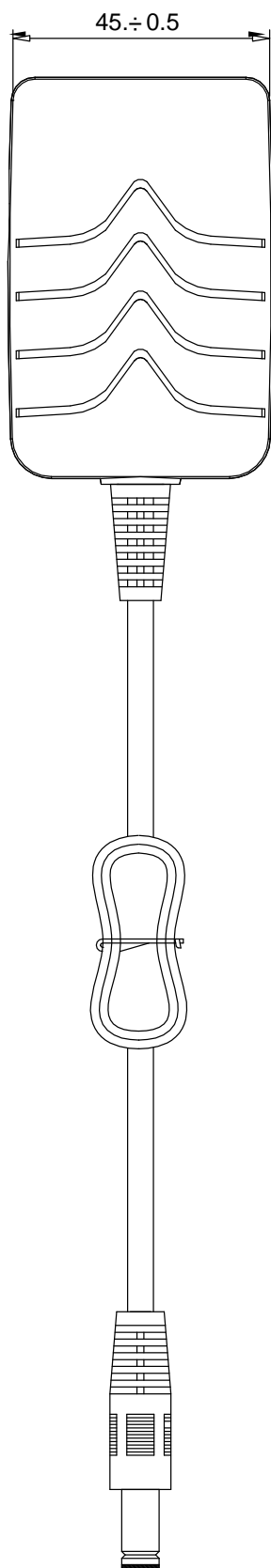
WIRE:AWM2464 22AWG
DC PLUG: Φ 2.1*5.5*10mm
COLOR:BLACK

Customer:
Model: SW18-09002000-EK
SPECIFICATION NO.:
Part no.: SW18-09002000-EKB1

Switching Mode Power Supply

PRODUCT SPECIFICATIONS

7 Production of appearance drawing(black):



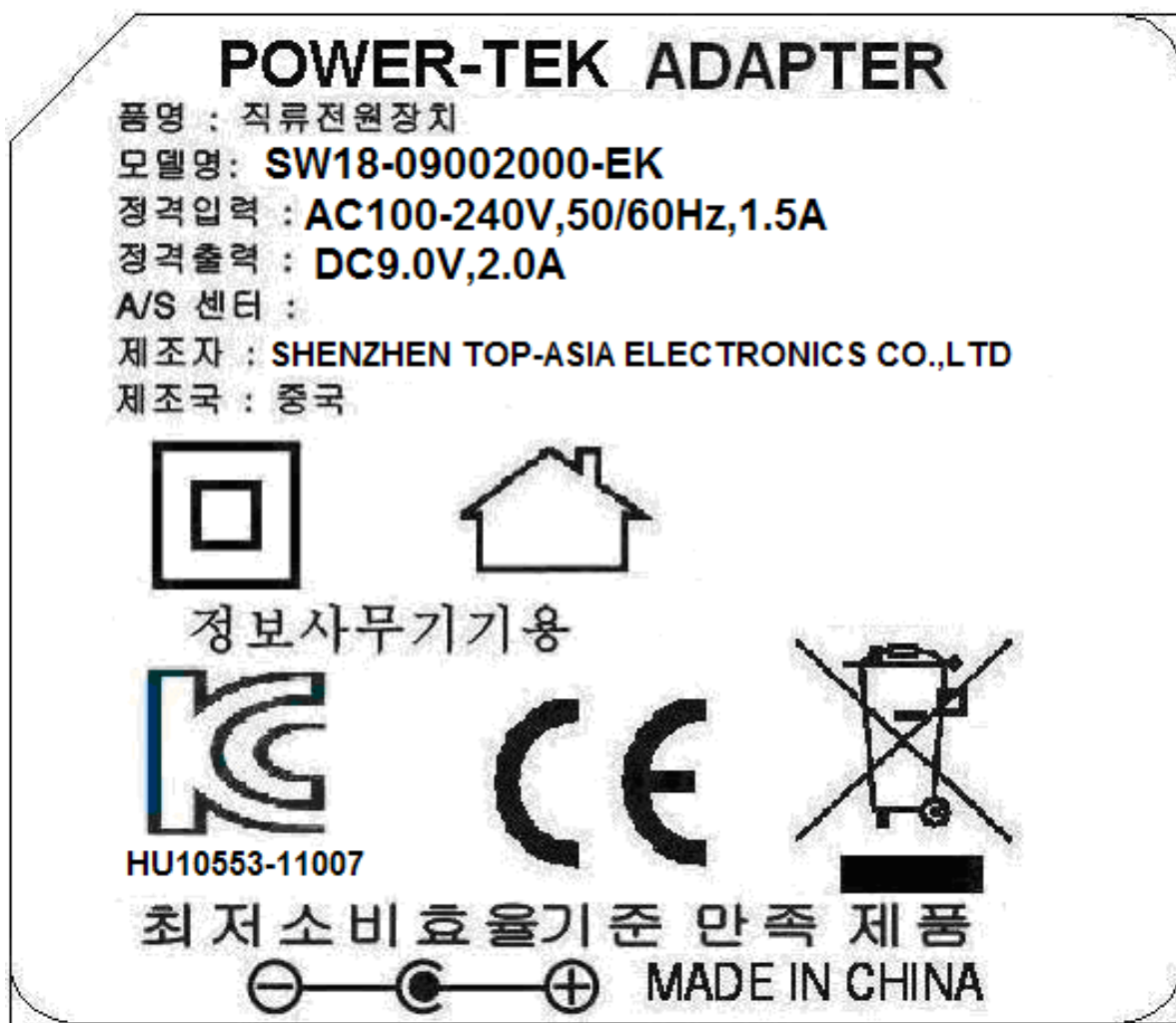
COLOR:BLACK

Customer:
Model: SW18-09002000-EK
SPECIFICATION NO.:
Part no.: SW18-09002000-EKB1

Switching Mode Power Supply

PRODUCT SPECIFICATIONS

8 Label:



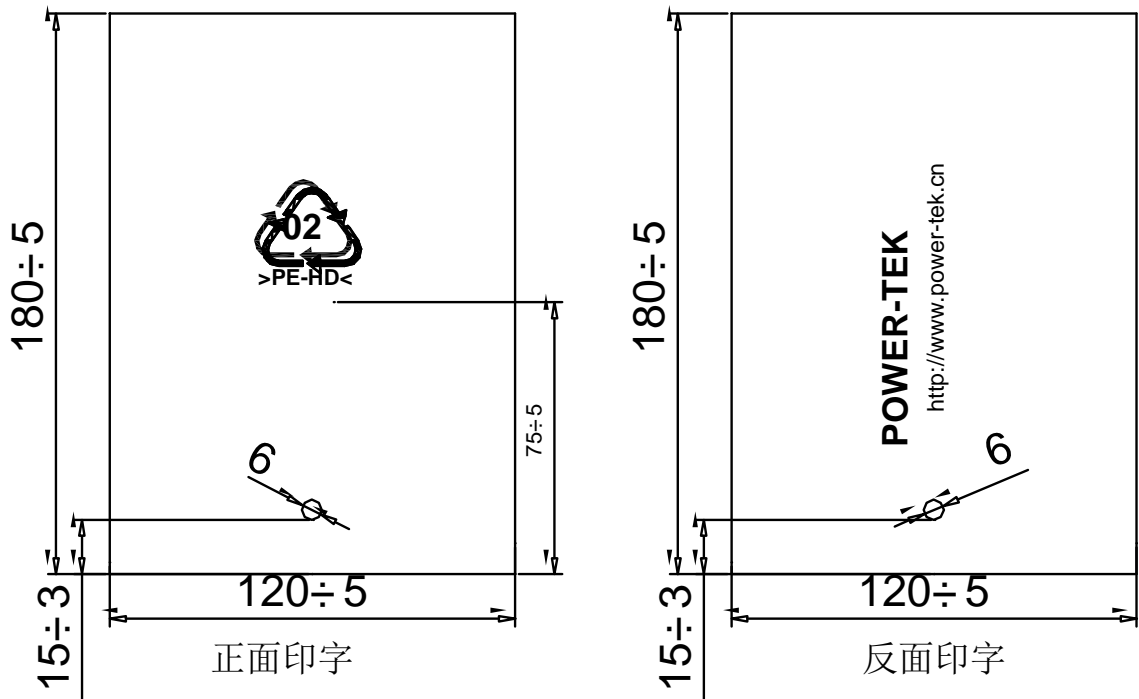
备注:

铭牌颜色: 灰底黑字.

Customer:
 Model: SW18-09002000-EK
 SPECIFICATION NO.:
 Part no.: SW18-09002000-EKB1

Switching Mode Power Supply

PRODUCT SPECIFICATIONS



NOTE:

1. 材质: PE材质
2. 厚度: 0.03mm
3. 颜色: 透明
4. 印字颜色: 黑色

 THIRD ANGLE PROJECTION 第三角法		版面 SHEET SIZE A4	材质 MATERIAL 0.04 PE薄膜	比例 SCALE —	单位 UNIT mm	齐亚圣电子有限公司 TOP-ASIA ELECTRONICS CO.,LTD			
承认 APPROVED	确认 CHECKED	检图 CHECKED	制图 DRAWING	公差 TOLERANCE		图名 NAME	PE袋图	页码 PAGE	1/1
			杨竣翔	L < 4	±0.05 ±0.08 ±0.10 ±0.20			日期 DATE	07/26.13
				4 < L < 20	±0.08 ±0.10 ±0.20 ±0.30	图号 W.G. NO.			
				20 < L < 50	±0.10 ±0.15 ±0.30 ±0.40				
				50 < L < 200	±0.15 ±0.25 ±0.40 ±0.60				
				200 < L	±0.20 ±0.40 ±0.50 ±0.80				

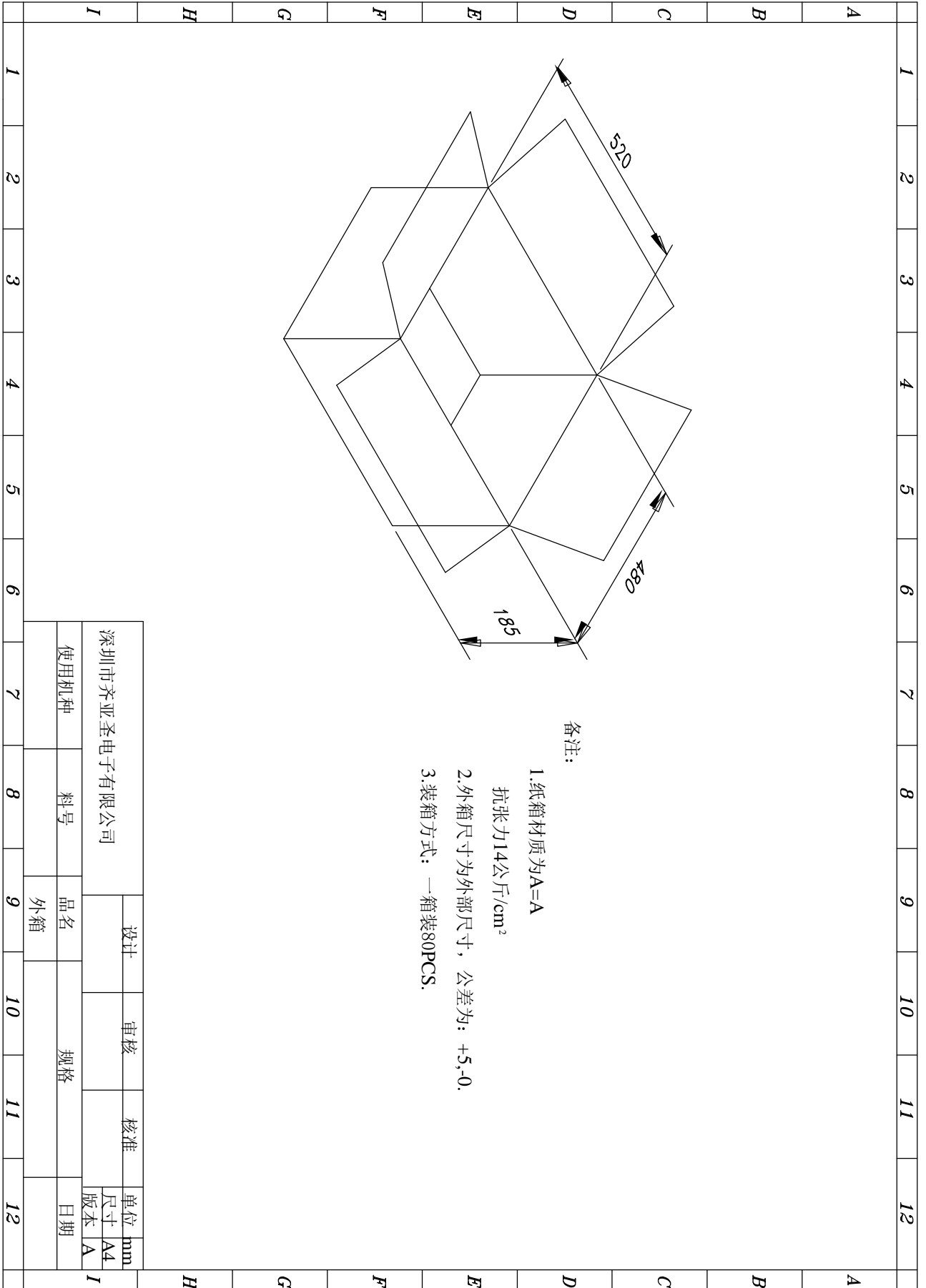
Customer:

Model: SW18-09002000-EK

SPECIFICATION NO.:

Part no.: SW18-09002000-EKB1

PRODUCT SPECIFICATIONS



备注:

1. 纸箱材质为A=A
抗张力14公斤/cm²
2. 外箱尺寸为外部尺寸，公差为：+5,-0.
3. 装箱方式：一箱装80PCS.

深圳市齐亚圣电子有限公司		设计	审核	核准	单位
使用机种	料号	品名	规格	尺寸	mm
		外箱		版本	A4
				日期	A

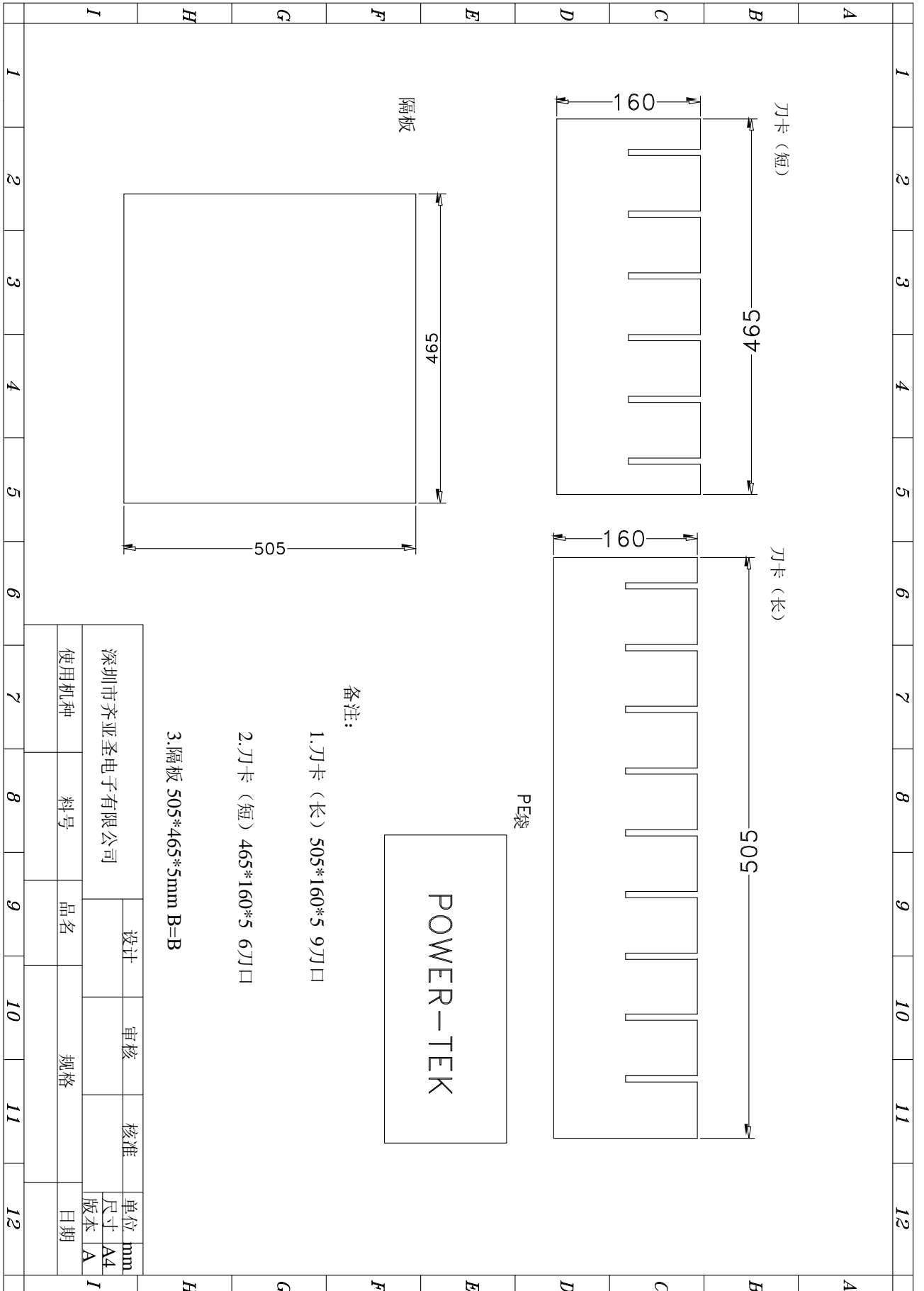
Customer:

Model: SW18-09002000-EK

SPECIFICATION NO.:

Part no.: SW18-09002000-EKB1

PRODUCT SPECIFICATIONS



备注:

1.刀卡 (长) 505*160*5 9刀口

2.刀卡 (短) 465*160*5 6刀口

3.隔板 505*465*5mm B=B

深圳市齐亚圣电子有限公司		设计	审核	核准	单位
使用机种	料号	品名	规格	尺寸	mm
				版本	A4
				日期	A

Customer:

Switching Mode Power Supply

Model: SW18-09002000-EK

SPECIFICATION NO.:

PRODUCT SPECIFICATIONS

Part no.: SW18-09002000-EKB1

深圳市齐亚圣电子有限公司

地址: 深圳市宝安区西乡街道后瑞工业区B栋3楼 Tel: 0755-29602774, Fax:0755-81458001

产品 BOM 资料表

产品编号: SW18-09002000-EKB1

产品名称: 9V2A EK B1 版本正标电源适配器(KR030)

展开阶数	子件编号	子件名称	子件用量	耗损率	位号
1	A02009930070	环保 1.0mm 无铅锡线 sn99.3cu0.7	0.0004KG	0%	锡面修补, 焊 DC
1	A07000550050	环保宽 55mm 厚 0.05 封箱胶	0.0692M	0.3%	封箱
1	A10000000000	环保绿胶水(螺丝固定剂)	0.0001KG	0.3%	螺母固定
1	A120000510F0	环保 AP-688/HN3051 硅胶	0.0012 公斤	0.3%	
1	C01520480170	外箱 L520*W480*H185mm K=K 外销 箱带 POWER-TEK 印字	0.0125PCS	0.3%	装箱
1	C03180902003	环保标签 9V2A EK 卧式 28*24mm 灰底 黑字	1PCS	0.3%	
1	C03FRQCPASS0	QC PASS 易碎贴(周期颜色变换) φ 15mm	1PCS	0.3%	上下盖之间
1	C07180012000	PE 袋 180*120*0.06mm 120mm 单面开 口 加孔 印可“回收”标示和 made in china 带 POWER-TEK 字样	1PCS	0.3%	包组立 OK 品
1	C08465145050	短 6 刀卡长 465*宽 160*厚 5mm B=B	0.1125PCS	0.3%	装箱
1	C08505160050	长 9 刀卡长 505*宽 160*厚 5mm B=B	0.075PCS	0.3%	装箱
1	C09505465050	长 505*宽 465*厚 5mm 隔板 B=B	0.025PCS	0.3%	装箱
1	EDIDT20100D0	肖特基 MBR20100 TO-220(金封)	1PCS	0.3%	D7
1	EIA031027000	绝缘粒 TO-220	1PCS	0.3%	D7
1	EIG191303000	绝缘片 TO-220	1PCS	0.3%	D7
1	ESA150065040	长 15*宽 6.5*厚 4mm 黑色防火海绵贴	1PCS	0.3%	贴于变压器
1	ETHM004N60D0	场效应管 4N60 绝缘型	1PCS	0.3%	Q1
1	EWDCB10070C3	红色导线 UL1007 22#0.16/17 总长 70mm 9/3.5mm 镀锡 80°C300V AC	2PCS	0.3%	N
1	EWJCB21540S3	DC 线 5.5*2.1*10mm 音叉直头带出台 UL2464 22#0.16/17 L=1500+40mm 24W Min SR OD=3.5mm	1PCS	0.3%	DC OUTPUT
1	HNUSN030024D	螺母 M3*0.5	2PCS	0.3%	Q1, D7
1	HRAL0330150A	散热片 (17+16)*19*1.5mm AL	1PCS	0.3%	HS1
1	HRAR0360150A	散热片 36*19*1.5mm AL	1PCS	0.3%	HS2
1	HSCKM030080D	螺钉 KM3*8mm 细牙电镀	2PCS	0.3%	Q1, D7
1	PCDS09020C10	9V2A 正标插件 OK 板 0 版	1PCS	0%	
2	A01009930070	环保无铅纯锡条	0.0007KG	0%	PCB 波峰焊接
2	A0300TF88701	环保无铅 TF-88-7 消光型助焊剂	0.0008L	0%	PCB 波峰喷雾
2	ECA102DMICJ0	高压瓷片电容 102M/1KV Y5P(蓝色) L=3.5±0.4mm	1PCS	0.3%	C9
2	ECA104DM1XL1	X 电容 104M/275VAC L13*W6*H12mm P=10MM L=3.5±0.4mm	1PCS	0.3%	CX1
2	ECA106DM1D60	电解电容 LOESR10uF/50V Φ5*11mm L=3.5±0.2mm	1PCS	0.3%	C4
2	ECA108DM1021	电解电容 LOESR 1000UF/16V Φ10*17mm L=3.5±0.2mm	1PCS	0.3%	C7
2	ECA222DJ1LMO	高压米拉电容 222J/630V CL11 P=5MM L=3.5±0.4mm 厚度≤3.4mm	1PCS	0.3%	C2
2	ECA222DM1YE0	Y1 电容 222M/400V Y5V P=10MM L=3.5±0.4mm	1PCS	0.3%	CY1
2	ECA227DM1020	电解电容 LOESR 220UF/16V φ 6*12mm L=3.5±0.2mm	1PCS	0.3%	C8
2	ECA336DM1DE0	电解电容 33UF/400V φ 13*20mm	1PCS	0.3%	C1
2	ECAHS0701000	热缩套管 φ 1*7mm(长圆套管)	1PCS	0.3%	C1+
2	ECAHS1406000	热缩套管 φ 6*14mm(长圆套管)	1PCS	0.3%	F1
2	EDIDDN4007T0	编带 52mm 整流二极管 1N4007 DO-41 MIC/CE	5PCS	0.3%	D1, 2, 3, 4, 6

Customer:

Switching Mode Power Supply

Model: SW18-09002000-EK

SPECIFICATION NO.:

PRODUCT SPECIFICATIONS

Part no.: SW18-09002000-EKB1

2	EDIDFFR107T0	编带快恢复二极管 FR107 DO-41	1PCS	0.3%	D5
2	EFUT25002021	保险管 2.0A/250V Φ 3.6*10.0mm 慢断	1PCS	0.3%	F1
2	EICUPC817CD0	光耦 PC817C DIP-4	1PCS	0.3%	IC2
2	EINLC15A0750	电感 DR3*12 Φ 0.75*8.5TS 1-2uH L=4.5 \pm 0.5mm	1PCS	0.3%	L1
2	EINLS2030250	电感 UU9.8 立式 Φ 0.25*90TS \geq 20mH 北清制造 V-0 130 $^{\circ}$ C	1PCS	0.3%	LF1
2	EINLT1200500	电感 T9*5*3 Φ 0.5*14TS 1.2MH Min L=4.5 \pm 0.5mm	1PCS	0.3%	L2
2	ERE1503TBFC0	编带碳膜电阻 150K \pm 5% 1/4W	1PCS	0.3%	R3
2	EREMF725D9T0	热敏电阻 MF72 5D-9 L=3.5 \pm 0.4mm	1PCS	0.3%	NTC1
2	ETRH09002001	PQ2020 9V2A 变压器 6+8Pin 900 uH	1PCS	0.3%	T1
2	PCSS09020C10	9V2A SMT OK 板	1PCS	0%	
3	ECA103NK1S63	贴片电容 0805/103/50V NPO	1PCS	0.3%	C5
3	ECA471SK1S63	贴片电容 0805/471/50V \pm 10% X7R	1PCS	0.3%	C6
3	ECA474SK1S63	贴片电容 0805/474/50V \pm 10% X7R	1PCS	0.3%	C10
3	EICU0B2263S0	贴片 IC PWM OB2263 SOT-23-6 (OB 品牌)	1PCS	0.3%	IC1
3	EICUUTC431S1	SMD 控制 IC UTC431 \pm 0.5% SOT-123	1PCS	0%	IC3
3	ERE0000SBF14	SMD1206 电阻 0R \pm 5% 印字 0	2PCS	0.3%	R9, R15
3	ERE0020SBF14	SMD1206 电阻 2R \pm 5% 印字 2R0	2PCS	0.3%	R6, R7
3	ERE0100SAF13	SMD0805 电阻 10R \pm 5% 印字 100	1PCS	0.3%	R13
3	ERE0100SBF14	SMD1206 电阻 10R \pm 5% 印字 100	1PCS	0.3%	R14
3	ERE0150SBF14	SMD1206 电阻 15R \pm 5% 印字 150	1PCS	0.3%	R19
3	ERE030ASBF14	SMD1206 电阻 3R \pm 5% 印字 3R0	1PCS	0.3%	R8
3	ERE1001SAD13	SMD0805 电阻 1K \pm 1% 印字 1001	1PCS	0.3%	R25
3	ERE1001SAF13	SMD0805 电阻 1K \pm 5% 印字 102	2PCS	0.3%	R21, R22
3	ERE1003SAF13	SMD0805 电阻 100K \pm 5% 印字 104	1PCS	0.3%	R16
3	ERE1003SBF14	SMD1206 电阻 100K \pm 5% 印字 104	2PCS	0.3%	R4, R5
3	ERE1004SBF14	SMD1206 电阻 1M \pm 5% 印字 105	3PCS	0.3%	R1, R2, R11
3	ERE2200SAF13	SMD0805 电阻 220R \pm 5% 印字 221	1PCS	0.3%	R12
3	ERE2201SBF14	SMD1206 电阻 2K2 \pm 5% 印字 222	1PCS	0.3%	R20
3	ERE2701SAD13	SMD0805 电阻 2K7 \pm 1% 印字 2701	1PCS	0.3%	R24
3	ERE3900SAF13	SMD0805 电阻 390R \pm 5% 印字 391	1PCS	0.3%	R23
3	PCBS05030C11	TAE-5V3A REV:A CEM-1(76*39*T 1.2MM)	1PCS	0.3%	PCB
1	PLB24ZXKBB1	下盖 24W 卧式 KC 黑色铜脚	1PCS	1%	下盖
1	PLM050400250	麦拉片 50*40.5*0.4mm 非边缘背胶 右上角带 U 形缺口	1PCS	0.3%	下盖
1	PLT24ZXTBB1	上盖 24W 卧式黑色带字无孔	1PCS	1%	上盖

Customer:
 Model: SW18-09002000-EK
 SPECIFICATION NO.:
 Part no.: SW18-09002000-EKB1

Switching Mode Power Supply

PRODUCT SPECIFICATIONS

20111026 - 0024

[별지 제2호서식]

접수번호 :



전기용품 안전인증서

Electrical Appliances Safety Certificate

안전인증번호: HU10553-11007B
 (Certificate No.)
 제조업자명: Shenzhen Top-Asia Electronics Co., Limited.
 (Manufacturer)
 대표자명: DAOL WONG
 (President)
 제조공장의소재지: 3F/B, XinRui Logistics Park HouRui Village, HuangTian, Bao'an,
 (Factory Address) Shenzhen city, Guangdong, China.
 제품명: 직류전원장치 (AC/DC Adapter)
 (Product)
 기본모델명: SW36-09004000-EK
 (Basic Model)
 정격: 100-240 V~, 50/60 Hz, 1.5 A (O/P: 9 Vdc / 4.0 A)
 (Rating)
 파생모델명 (Series Model):
 SW06-05000500-EK SW06-05000600-EK
 SW06-05000800-EK SW06-05001000-EK
 SW06-05001200-EK SW06-05000500-EK
 SW06-05501000-EK SW06-06000500-EK
 SW06-09001000-EK SW06-07200500-EK
 SW06-07500500-EK SW06-08000500-EK
 SW06-08400500-EK SW06-09000300-EK
 SW06-09000400-EK SW06-09500500-EK
 SW06-10000500-EK SW06-10500500-EK
 SW06-11000500-EK 이면기재

적용기준: K 60950-1(2006-12) K00024(2009-12)
 (Standard) K00022(2009-12) K00024(2009-12)

「전기용품안전 관리법 시행규칙」 제6조제2항에 따라 위의 전기용품에 대하여 안전인증서를 발급합니다.

We issue Electrical Appliances Safety Certification above product by Article 6 Section 2 of the Electrical Appliances Safety Control Law Enforcement Regulation.

2011년 11월 8일
 (Year) (Month) (Day)



한국기계전기전자시험연구원장
 Korea Testing Certification

※ 본 인증서는 「전기용품안전 관리법」에 따른 전기제품 안전성확인에 한정된 것이며, 그 밖의 다른 법률이 적용되는 제품의 경우에는 해당 법률에 따라 추가적으로 인증·허가 등을 받아야 합니다.

- 첨부서류
1. 안전관리부품 및 재질목록 (List of Critical Components)
 2. 기본모델·파생모델의 내용 (General Descriptions of Certified Products)
 3. 전기용품안전인증의 변경현황 (Status of Certificate Revisions)

Customer:

Switching Mode Power Supply

Model: [SW18-09002000-EK](#)

SPECIFICATION NO.:

PRODUCT SPECIFICATIONS

Part no.: [SW18-09002000-EKB1](#)



SW08-05001500-EK	SW08-07201000-EK
SW08-07501000-EK	SW08-08001000-EK
SW09-05501500-EK	SW09-06001500-EK
SW09-08401000-EK	SW09-09001000-EK
SW10-05002000-EK	SW10-08401200-EK
SW10-09501000-EK	SW10-10001000-EK
SW11-05502000-EK	SW11-07201500-EK
SW11-10501000-EK	SW11-11001000-EK
SW12-06002000-EK	SW12-07501500-EK
SW12-08001500-EK	SW13-06002500-EK
SW13-08401500-EK	SW14-05502500-EK
SW14-09001500-EK	SW15-05003000-EK
SW15-06002500-EK	SW15-07202000-EK
SW15-07502000-EK	SW15-09501500-EK
SW15-10001500-EK	SW16-08002000-EK
SW16-10501500-EK	SW17-06503000-EK
SW17-08402000-EK	SW17-11001500-EK
SW18-05003500-EK	SW18-06003000-EK
SW18-07202500-EK	SW18-09002000-EK
SW19-07502500-EK	SW19-09502000-EK
SW20-05004000-EK	SW20-06003500-EK
SW20-08002500-EK	SW20-10002000-EK
SW21-06003500-EK	SW21-08402500-EK
SW21-10502000-EK	SW22-05504000-EK
SW22-07203000-EK	SW22-11002000-EK
SW23-05004500-EK	SW23-07503000-EK
SW23-09002500-EK	SW24-06004000-EK
SW24-08003000-EK	SW24-09502500-EK
SW25-05005000-EK	SW25-05504500-EK
SW25-10002500-EK	SW26-07203500-EK
SW26-08403000-EK	SW26-08503000-EK
SW27-06004500-EK	SW27-07503500-EK
SW27-09003000-EK	SW27-10502500-EK
SW28-05505000-EK	SW28-08003500-EK
SW29-07204000-EK	SW29-09503000-EK
SW30-07504000-EK	SW30-08403500-EK
SW30-10003000-EK	SW32-08004000-EK
SW32-09003500-EK	SW32-09503500-EK
SW32-10503000-EK	SW33-11003000-EK
SW34-08404000-EK	

Customer:
Model: SW18-09002000-EK
SPECIFICATION NO.:
Part no.: SW18-09002000-EKB1

Switching Mode Power Supply

PRODUCT SPECIFICATIONS



Date of Issue: 2009/06/22

Attestation Number: 0906.43-DE-01W01

Product: AC Adapter

Model No.: SWp-xy-w ("p" can be 24-60 for marketing purpose; "x" is 4 digit number which represents the output voltage, from 12.0V to 24.0V in step of 0.5V, for example, 1200 represents the output voltage is 12.0V, 2400 represents the output voltage is 24.0V; "y" is 4 digit number which represents the output current, from 1.0A to 5.0A in step of 0.1A, for example, 1000 represents the output current is 1.0A, 5000 represents the output current is 5.0A)

Applicant: SHENZHEN TOP-ASIA ELECTRONICS CO. LTD

Address: No.4Fuzhong Industrial Park,Fuzhong Rd.Fuyong Baoan District,Shenzhen

And, in accordance to the following Applicable Directives

Applicable to EUROPEAN COUNCIL DIRECTIVE 2004/108/EC
(The Information Technology Equipment)

That this product has been assessed against the following Applicable Standards

EN 55022:2006 (Class B)	EN 55024 : 1998/ A1:2004/ A2:2005
EN 61000-3-2 : 2006	IEC 61000-4-2 : 1995/ A1:1998/ A2:2001
EN 61000-3-3 : 1995/ A1:2001/ A2:2005	IEC 61000-4-3 : 2006
	IEC 61000-4-4 : 2004
	IEC 61000-4-5 : 2005
	IEC 61000-4-6 : 2006
	IEC 61000-4-8 : 1993/A1 : 2001
	IEC 61000-4-11 : 2004

The measurements shown in this test report may issue a DECLARATION of CONFORMITY and apply the CE mark in accordance to European Union Rules.

Attestation by:


Eric Chiu /Supervisor

2009/06/22

Date